

**Douglas A. Ducey**  
Governor



**Barry Wong**  
Executive  
Director

**GOVERNOR'S OFFICE OF EQUAL OPPORTUNITY**

**100 North 15th Avenue, Suite 261  
Phoenix, Arizona 85007  
(602) 542-3711  
eo.azgovernor.gov**

September 1, 2016

The Honorable Douglas A. Ducey  
Governor, State of Arizona  
1700 W. Washington Street  
Phoenix, AZ 85007

Governor Ducey,

For your approval, the Governor's Office of Equal Opportunity is please to present the strategic plan (AZIPS) for FY18.

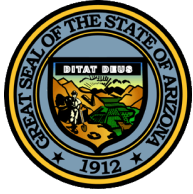
Thank you for your attention to this matter. If you have any questions, comments or concerns, please do not hesitate to contact me. I may be reached at (602) 542-5723.

Respectfully,

A handwritten signature in blue ink that reads "Barry Wong" with a stylized flourish at the end.

Barry Wong, JD  
Executive Director

Governor's Office of Equal Opportunity | State of Arizona



# State of Arizona Budget Request

State Agency

Governor's Office for Equal Opportunity

A.R.S. Citation: **Executive Order 93-20**

## Appropriated Funds

	FY 2017 Expd. Plan	FY 2018 Fund. Issue	FY 2018 Total Budget
Total Amount Requested:	189.1	0.0	189.1
General Fund	189.1	0.0	189.1

### Governor DUCEY:

This and the accompanying budget schedules, statements and explanatory information constitute the operating budget request for this agency for Fiscal Year 2018.

To the best of my knowledge all statements and explanations contained in the estimates submitted are true and correct.

Agency Head: **Barry Wong**

Title: **Executive Director**

(signature)

Phone: **(602) 542-1301**

Prepared By: **Travis price**

Email Address: **tprice@az.gov**

Date Prepared: **Friday, September 21, 2012**

## Summary of Expenditure and Budget Request for All Funds

**Agency:** AFA Governor's Office for Equal Opportunity

**Appropriated**

		FY 2016 Actual	FY 2017 Expd. Plan	FY 2018 Fund. Issue	FY 2018 Total
Cost Center/Program:					
1	Equal Opportunity	187.3	189.1	0.0	189.1
		187.3	189.1	0.0	189.1
<b>Expenditure Categories</b>					
	FTE	4.0	4.0	0.0	4.0
	Personal Services	134.4	125.5	0.0	125.5
	Employee Related Expenses	49.1	50.9	0.0	50.9
	Professional and Outside Services	0.6	5.0	0.0	5.0
	Travel In-State	0.1	1.2	0.0	1.2
	Travel Out of State	0.0	0.0	0.0	0.0
	Food (Library for Universities)	0.0	0.0	0.0	0.0
	Aid to Organizations and Individuals	0.0	0.0	0.0	0.0
	Other Operating Expenses	3.1	4.5	0.0	4.5
	Equipment	0.0	2.0	0.0	2.0
	Capital Outlay	0.0	0.0	0.0	0.0
	Debt Service	0.0	0.0	0.0	0.0
	Cost Allocation	0.0	0.0	0.0	0.0
	Transfers	0.0	0.0	0.0	0.0
<b>Expenditure Categories Total:</b>		187.3	189.1	0.0	189.1

# Summary of Expenditure and Budget Request for All Funds

Agency: AFA Governor's Office for Equal Opportunity

Agency Total for All Funds:	187.3	189.1	0.0	189.1			
-----------------------------	-------	-------	-----	-------	--	--	--

## Summary of Expenditure and Budget Request for Selected Funds

<b>Agency:</b> AFA Governor's Office for Equal Opportunity
<b>Fund:</b> 1000 General Fund (Appropriated)

	FY 2016 Actual	FY 2017 Expd. Plan	FY 2018 Fund. Issue	FY 2018 Total
Cost Center/Program:				
1 Equal Opportunity	187.3	189.1	0.0	189.1
	187.3	189.1	0.0	189.1
<b>Expenditure Categories</b>				
FTE	4.0	4.0	0.0	4.0
Personal Services	134.4	125.5	0.0	125.5
Employee Related Expenses	49.1	50.9	0.0	50.9
Professional and Outside Services	0.6	5.0	0.0	5.0
Travel In-State	0.1	1.2	0.0	1.2
Travel Out of State	0.0	0.0	0.0	0.0
Food (Library for Universities)	0.0	0.0	0.0	0.0
Aid to Organizations and Individuals	0.0	0.0	0.0	0.0
Other Operating Expenses	3.1	4.5	0.0	4.5
Equipment	0.0	2.0	0.0	2.0
Capital Outlay	0.0	0.0	0.0	0.0
Debt Service	0.0	0.0	0.0	0.0
Cost Allocation	0.0	0.0	0.0	0.0
Transfers	0.0	0.0	0.0	0.0
<b>Expenditure Categories Total:</b>	187.3	189.1	0.0	189.1
<b>Fund Total:</b>	187.3	189.1	0.0	189.1

## Summary of Expenditure and Budget Request for Selected Funds

<b>Agency:</b>	AFA	Governor's Office for Equal Opportunity
<b>Fund:</b>	1000	General Fund (Appropriated)

	FY 2016 Actual	FY 2017 Expd. Plan	FY 2018 Fund. Issue	FY 2018 Total
<b>Agency Total for Selected Funds</b>	187.3	189.1	0.0	189.1

## Program Summary of Expenditures and Budget Request

<b>Agency:</b>	AFA	Governor's Office for Equal Opportunity
<b>Program:</b>	1	Equal Opportunity

		FY 2016 Actual	FY 2017 Expd. Plan	FY 2018 Fund. Issue	FY 2018 Total
<b>Program Summary</b>					
1-1	Public Advocacy Division	187.3	189.1	0.0	189.1
<b>Program Summary Total:</b>		187.3	189.1	0.0	189.1
<b>Expenditure Categories</b>					
0000	FTE Positions	4.0	4.0	0.0	4.0
6000	Personal Services	134.4	125.5	0.0	125.5
6100	Employee Related Expenses	49.1	50.9	0.0	50.9
6200	Professional and Outside Services	0.6	5.0	0.0	5.0
6500	Travel In-State	0.1	1.2	0.0	1.2
6600	Travel Out of State	0.0	0.0	0.0	0.0
6700	Food (Library for Universities)	0.0	0.0	0.0	0.0
6800	Aid to Organizations and Individuals	0.0	0.0	0.0	0.0
7000	Other Operating Expenses	3.1	4.5	0.0	4.5
8000	Equipment	0.0	2.0	0.0	2.0
8100	Capital Outlay	0.0	0.0	0.0	0.0
8600	Debt Service	0.0	0.0	0.0	0.0
9000	Cost Allocation	0.0	0.0	0.0	0.0
9100	Transfers	0.0	0.0	0.0	0.0
<b>Expenditure Categories Total:</b>		187.3	189.1	0.0	189.1
<b>Fund Source</b>					
<b>Appropriated Funds</b>					
1000-A	General Fund (Appropriated)	187.3	189.1	0.0	189.1
<b>Fund Source Total:</b>		187.3	189.1	0.0	189.1

## Program Group Summary of Expenditures and Budget Request for Selected Funds

<b>Agency:</b>	AFA	Governor's Office for Equal Opportunity
<b>Program:</b>	1	Equal Opportunity

		FY 2016	FY 2017	FY 2018	FY 2018
		Actual	Expd. Plan	Fund. Issue	Total
<b>Fund: 1000-A General Fund (Appropriated)</b>					
<b>Program Expenditures</b>					
COST CENTER/PROGRAM BUDGET UNIT					
1-1	Public Advocacy Division	187.3	189.1	0.0	189.1
	Total	187.3	189.1	0.0	189.1
<b>Appropriated Funding</b>					
<b>Expenditure Categories</b>					
	FTE Positions	4.0	4.0	0.0	4.0
	Personal Services	134.4	125.5	0.0	125.5
	Employee Related Expenses	49.1	50.9	0.0	50.9
	Professional and Outside Services	0.6	5.0	0.0	5.0
	Travel In-State	0.1	1.2	0.0	1.2
	Travel Out of State	0.0	0.0	0.0	0.0
	Food (Library for Universities)	0.0	0.0	0.0	0.0
	Aid to Organizations and Individuals	0.0	0.0	0.0	0.0
	Other Operating Expenses	3.1	4.5	0.0	4.5
	Equipment	0.0	2.0	0.0	2.0
	Capital Outlay	0.0	0.0	0.0	0.0
	Debt Service	0.0	0.0	0.0	0.0
	Cost Allocation	0.0	0.0	0.0	0.0
	Transfers	0.0	0.0	0.0	0.0
<b>Expenditure Categories Total:</b>		187.3	189.1	0.0	189.1
<b>Fund 1000-A Total:</b>		187.3	189.1	0.0	189.1
<b>Program 1 Total:</b>		187.3	189.1	0.0	189.1



## Program Budget Unit Summary of Expenditures and Budget Request for All Funds

<b>Agency:</b>	AFA	Governor's Office for Equal Opportunity
<b>Program:</b>	1-1	Public Advocacy Division

Expenditure Categories	FY 2016 Actual	FY 2017 Expd. Plan	FY 2018 Fund. Issue	FY 2018 Total
0000 FTE	4.0	4.0	0.0	4.0
6000 Personal Services	134.4	125.5	0.0	125.5
6100 Employee Related Expenses	49.1	50.9	0.0	50.9
6200 Professional and Outside Services	0.6	5.0	0.0	5.0
6500 Travel In-State	0.1	1.2	0.0	1.2
6600 Travel Out of State	0.0	0.0	0.0	0.0
6700 Food (Library for Universities)	0.0	0.0	0.0	0.0
6800 Aid to Organizations and Individuals	0.0	0.0	0.0	0.0
7000 Other Operating Expenses	3.1	4.5	0.0	4.5
8000 Equipment	0.0	2.0	0.0	2.0
8100 Capital Outlay	0.0	0.0	0.0	0.0
8600 Debt Service	0.0	0.0	0.0	0.0
9000 Cost Allocation	0.0	0.0	0.0	0.0
9100 Transfers	0.0	0.0	0.0	0.0
<b>Expenditure Categories Total:</b>	187.3	189.1	0.0	189.1
<b>Fund Source</b>				
<b>Appropriated Funds</b>				
1000-A General Fund (Appropriated)	187.3	189.1	0.0	189.1
	187.3	189.1	0.0	189.1
<b>Fund Source Total:</b>	187.3	189.1	0.0	189.1

## Program Budget Unit Summary of Expenditures and Budget Request for Selected Funds

<b>Agency:</b> AFA Governor's Office for Equal Opportunity					
		FY 2016	FY 2017	FY 2018	FY 2018
		Actual	Expd. Plan	Fund. Issue	Total
<b>Program:</b> 1-1 Public Advocacy Division					
<b>Fund:</b> 1000-A General Fund					
<b>Appropriated</b>					
0000	FTE	4.0	4.0	0.0	4.0
6000	Personal Services	134.4	125.5	0.0	125.5
6100	Employee Related Expenses	49.1	50.9	0.0	50.9
6200	Professional and Outside Services	0.6	5.0	0.0	5.0
6500	Travel In-State	0.1	1.2	0.0	1.2
6600	Travel Out of State	0.0	0.0	0.0	0.0
6700	Food (Library for Universities)	0.0	0.0	0.0	0.0
6800	Aid to Organizations and Individuals	0.0	0.0	0.0	0.0
7000	Other Operating Expenses	3.1	4.5	0.0	4.5
8000	Equipment	0.0	2.0	0.0	2.0
8100	Capital Outlay	0.0	0.0	0.0	0.0
8600	Debt Service	0.0	0.0	0.0	0.0
9000	Cost Allocation	0.0	0.0	0.0	0.0
9100	Transfers	0.0	0.0	0.0	0.0
<b>Appropriated Total:</b>		187.3	189.1	0.0	189.1
<b>Fund Total:</b>		187.3	189.1	0.0	189.1
<b>Program Total For Selected Funds:</b>		187.3	189.1	0.0	189.1

## Program Expenditure Schedule

<b>Agency:</b>	AFA	Governor's Office for Equal Opportunity
<b>Program:</b>	1-1	Public Advocacy Division

Expenditure Category	FY 2016 Actual	FY 2017 Expd. Plan
<b>FTE Positions</b>		
FTE	4.0	4.0
<b>Expenditure Category Total</b>	<b>4.0</b>	<b>4.0</b>
<b>Fund Source</b>		
<b>Appropriated</b>		
1000-A General Fund (Appropriated)	4.0	4.0
<b>Fund Source Total</b>	<b>4.0</b>	<b>4.0</b>

Expenditure Category	FY 2016 Actual	FY 2017 Expd. Plan
<b>Personal Services</b>		
Personal Services	134.4	125.5
Boards and Commissions	0.0	0.0
<b>Expenditure Category Total</b>	<b>134.4</b>	<b>125.5</b>
<b>Fund Source</b>		
<b>Appropriated</b>		
1000-A General Fund (Appropriated)	134.4	125.5
<b>Fund Source Total</b>	<b>134.4</b>	<b>125.5</b>

Expenditure Category	FY 2016 Actual	FY 2017 Expd. Plan
<b>Employee Related Expenses</b>		
Employee Related Expenses	49.1	50.9
<b>Expenditure Category Total</b>	<b>49.1</b>	<b>50.9</b>
<b>Fund Source</b>		
<b>Appropriated</b>		
1000-A General Fund (Appropriated)	49.1	50.9
<b>Fund Source Total</b>	<b>49.1</b>	<b>50.9</b>

Expenditure Category	FY 2016 Actual	FY 2017 Expd. Plan
<b>Professional &amp; Outside Services</b>		
External Prof/Outside Serv Budg And Appn	0.0	0.0
External Investment Services	0.0	0.0
Other External Financial Services	0.0	0.0
Attorney General Legal Services	0.0	0.0
External Legal Services	0.0	0.0
External Engineer/Architect Cost - Exp	0.0	0.0
External Engineer/Architect Cost- Cap	0.0	0.0
Other Design	0.0	0.0
Temporary Agency Services	0.0	0.0
Hospital Services	0.0	0.0
Other Medical Services	0.0	0.0
Institutional Care	0.0	0.0
Education And Training	0.0	0.0
Vendor Travel	0.0	0.0

# Program Expenditure Schedule

<b>Agency:</b>	AFA	Governor's Office for Equal Opportunity
<b>Program:</b>	1-1	Public Advocacy Division

Expenditure Category	FY 2016 Actual	FY 2017 Expd. Plan
<b>Professional &amp; Outside Services</b>		
Professional & Outside Services Excluded from Cost Alloca	0.0	0.0
Vendor Travel - Non Reportable	0.0	0.0
External Telecom Consulting Services	0.0	0.0
Non - Confidential Specialist Fees	0.0	0.0
Confidential Specialist Fees	0.0	0.0
Outside Actuarial Costs	0.0	0.0
Other Professional And Outside Services	0.6	5.0
<b>Expenditure Category Total</b>	<b>0.6</b>	<b>5.0</b>

Fund Source		
<b>Appropriated</b>		
1000-A General Fund (Appropriated)	0.6	5.0
<b>Fund Source Total</b>	<b>0.6</b>	<b>5.0</b>

Expenditure Category	FY 2016 Actual	FY 2017 Expd. Plan
<b>Travel In-State</b>		
Travel In-State	0.1	1.2
<b>Expenditure Category Total</b>	<b>0.1</b>	<b>1.2</b>

Fund Source		
<b>Appropriated</b>		
1000-A General Fund (Appropriated)	0.1	1.2
<b>Fund Source Total</b>	<b>0.1</b>	<b>1.2</b>

Expenditure Category	FY 2016 Actual	FY 2017 Expd. Plan
<b>Travel Out-of-State</b>		
Travel Out of State	0.0	0.0
<b>Expenditure Category Total</b>	<b>0.0</b>	<b>0.0</b>

Expenditure Category	FY 2016 Actual	FY 2017 Expd. Plan
<b>Food (Library for Universities)</b>		
Food (Library for Universities)	0.0	0.0
<b>Expenditure Category Total</b>	<b>0.0</b>	<b>0.0</b>

Expenditure Category	FY 2016 Actual	FY 2017 Expd. Plan
<b>Aid to Organizations &amp; Individuals</b>		
Aid to Organizations and Individuals	0.0	0.0
<b>Expenditure Category Total</b>	<b>0.0</b>	<b>0.0</b>

## Program Expenditure Schedule

<b>Agency:</b>	AFA	Governor's Office for Equal Opportunity
<b>Program:</b>	1-1	Public Advocacy Division

Expenditure Category	FY 2016 Actual	FY 2017 Expd. Plan
<b>Other Operating Expenditures</b>		
Other Operating Expenditures	0.0	0.0
Insurance & Related Charges	1.0	1.2
Information Technology Services	0.4	0.0
Utilities	1.0	0.8
Non-Building or Land Rent	0.0	0.0
Building Rent Charges to State Agencies	0.0	0.0
COP Building Rent Charges to State Agencies	0.0	0.0
Rental of Land & Buildings	0.0	0.0
Interest Payments	0.0	0.0
Internal Acct, Budgeting and Financial Svcs.	0.0	0.0
Payments for Internal Services	0.0	0.0
Repair & Maintenance	0.0	0.0
Software Support and Maintenance	0.0	0.0
Operating Supplies	0.0	1.3
Resale Supplies	0.0	0.0
Sales of Assets	0.0	0.0
Conference, Education & Training	0.6	1.0
Advertising	0.0	0.0
Printing & Photography	0.0	0.0
Postage & Delivery	0.1	0.0
Miscellaneous Operating	0.0	0.2
Depreciation Expense	0.0	0.0
<b>Expenditure Category Total</b>	<b>3.1</b>	<b>4.5</b>
<b>Fund Source</b>		
<b>Appropriated</b>		
1000-A General Fund (Appropriated)	3.1	4.5
<b>Fund Source Total</b>	<b>3.1</b>	<b>4.5</b>

Expenditure Category	FY 2016 Actual	FY 2017 Expd. Plan
<b>Equipment</b>		
Vehicles - Capital Leases	0.0	0.0
Furniture - Capital Leases	0.0	0.0
EDP Equipment - Mainframe - Capital Leases	0.0	0.0
EDP Equipment - Midrange - Capital Leases	0.0	0.0
EDP Equipment - PCs/LAN - Capital Leases	0.0	0.0
Telecommunication Equipment - Capital Leases	0.0	0.0
Other Equipment - Capital Leases	0.0	0.0
Capital Equipment Purchases	0.0	0.0
Vehicles - Non-Capital	0.0	0.0
Furniture - Non-Capital	0.0	0.0
EDP Equipment - Mainframe - Non-Capital	0.0	2.0
Telecommunication Equipment - Non Capital	0.0	0.0
Other Equipment - Non-Capital	0.0	0.0
Purchased Or Licensed Software/Website	0.0	0.0
Internally Generated Software/Website	0.0	0.0

## Program Expenditure Schedule

<b>Agency:</b>	AFA	Governor's Office for Equal Opportunity
<b>Program:</b>	1-1	Public Advocacy Division

<u>Expenditure Category</u>	<u>FY 2016 Actual</u>	<u>FY 2017 Expd. Plan</u>
Equipment		
<b>Expenditure Category Total</b>	<b>0.0</b>	<b>2.0</b>
<b>Fund Source</b>		
Appropriated		
1000-A General Fund (Appropriated)	0.0	2.0
<b>Fund Source Total</b>	<b>0.0</b>	<b>2.0</b>

<u>Expenditure Category</u>	<u>FY 2016 Actual</u>	<u>FY 2017 Expd. Plan</u>
Capital Outlay		
Capital Outlay	0.0	0.0
<b>Expenditure Category Total</b>	<b>0.0</b>	<b>0.0</b>

<u>Expenditure Category</u>	<u>FY 2016 Actual</u>	<u>FY 2017 Expd. Plan</u>
Debt Services		
Debt Service	0.0	0.0
<b>Expenditure Category Total</b>	<b>0.0</b>	<b>0.0</b>

<u>Expenditure Category</u>	<u>FY 2016 Actual</u>	<u>FY 2017 Expd. Plan</u>
Cost Allocation		
Cost Allocation	0.0	0.0
<b>Expenditure Category Total</b>	<b>0.0</b>	<b>0.0</b>

<u>Expenditure Category</u>	<u>FY 2016 Actual</u>	<u>FY 2017 Expd. Plan</u>
Transfers		
Transfers	0.0	0.0
<b>Expenditure Category Total</b>	<b>0.0</b>	<b>0.0</b>

### Classification Listing

<u>Class Code</u>	<u>Title</u>	<u>Grade</u>	<u>Total FTE</u>
AUN03	AD ADMV ASST 2	15	1.0
DPS00	DIRECTOR	810	1.0
ACV24	EQUAL OPRTY SPCT II	18	1.0
ACV24	EQUAL OPRTY SPCT III	19	1.0

### Employee Retirement Coverage

<u>Retirement System</u>	<u>FTE</u>	<u>Personal Services</u>	<u>Fund#</u>
State Retirement System	4.0	125.5	1000-A

# Program Expenditure Schedule

Agency: AFA Governor's Office for Equal Opportunity

Program: 1-1 Public Advocacy Division

Combined Regular & Elected Positions At/Above  
FICA Maximum of \$118,500

Total FTE	Personal Services	FTE's not eligible for Health, Dental & Life
0.0	0.0	0.0

# Administrative Costs

Agency: AFA Governor's Office for Equal Opportunity

## Administrative Costs Summary

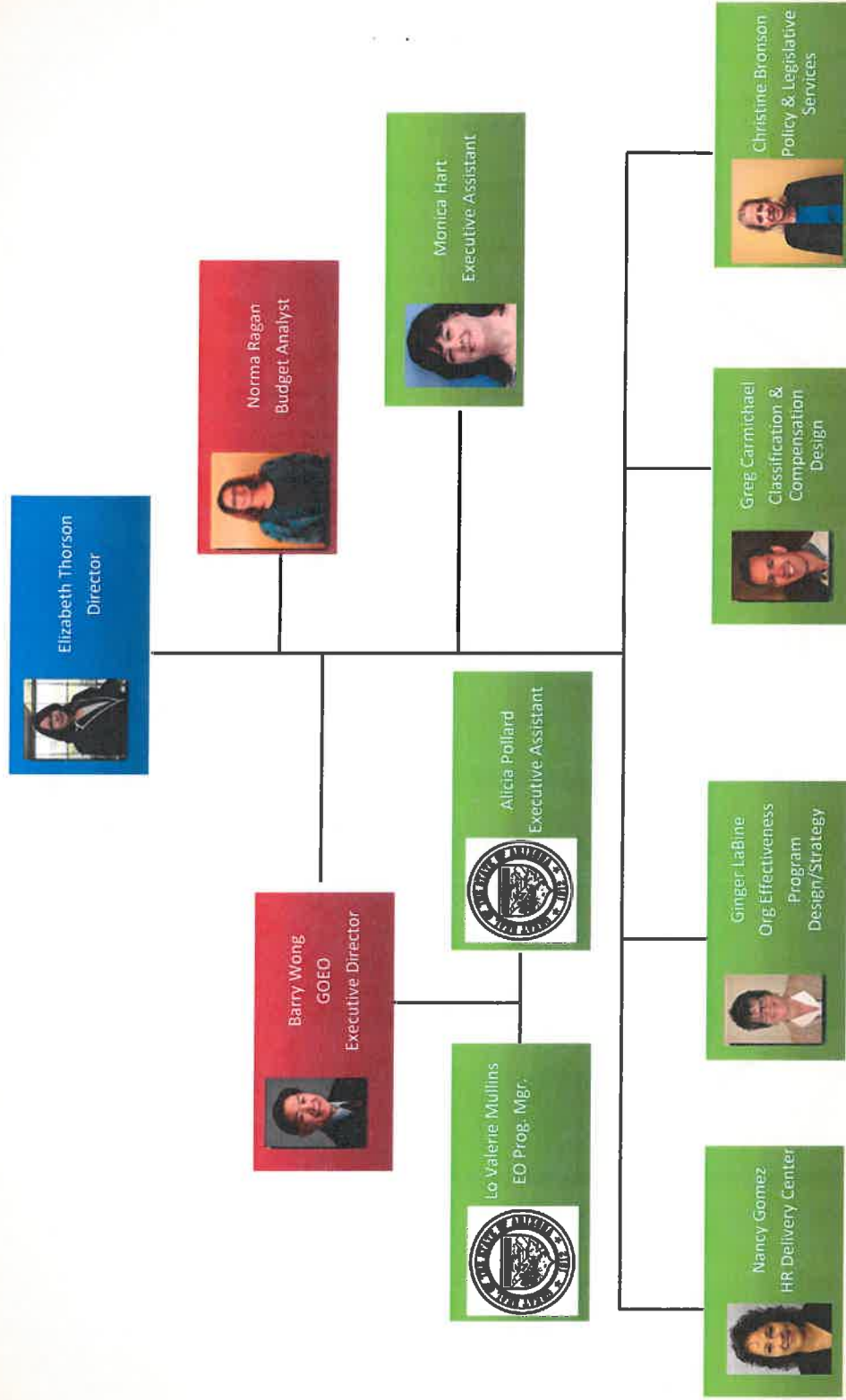
<u>Common Administrative Area</u>	<u>FY 2018</u>
Other Central Administration	0.0
Business and Finance	0.0
Information Technology	0.0
Human Resources	0.0
Director's Office	0.0
<b>Administrative Costs Total:</b>	<b>0.0</b>

## Administrative Cost / Total Expenditure Ratio

	<u>Request</u>	<u>Admin %</u>
<b>FY 2018</b>	189.1	0.0%



# Human Resources



9/1/2016